

PC
350

ELITE SOLUTIONS



PC
350

MAXIMUM FLEXIBILITY WITHOUT COMPROMISE.

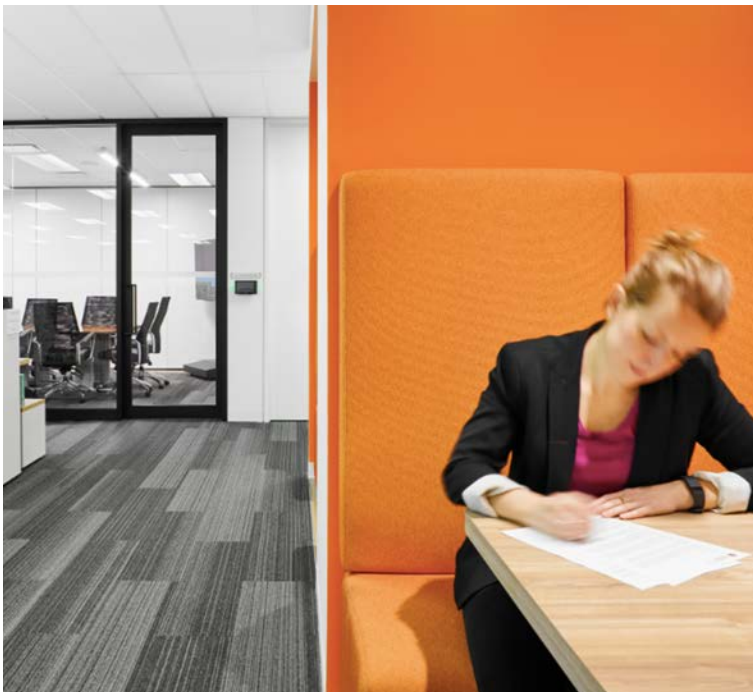


Our motivation to exceed expectations is you, our clients. Responding to the ever-changing needs of our design associates for over 45 years, the Elite Solutions line has expanded to answer your requests. We now offer centre and offset glazing pockets, conventional and thin-profile framing for both single- and double-glazed requirements. Elite Solutions can also adapt easily for both wrap around and flush mount construction. The true versatility of this go-to system is open for you to design with, we'll just make it happen.

Elite Solutions offer essential elements; SELF SUPPORTING unique profiles for floor, ceiling, horizontal and vertical posts and wall configurations. Our profiles harmonize effortlessly with conventional construction, while offering durability and flexibility. Elite profiles can adapt to serve as sidelight, screen, window or clearstory, inspiring long spans without mullions for many applications. Elite Wall and Door programs integrate easily with your space and footprint, simply paired with our PC350 Swing Glass Doors, offering a variety of compatible hardware options and design, simplifying the specification process.

Elite profiles can adapt to serve as sidelight, screen, window or clearstory, inspiring long spans without mullions for many applications and is quick and easy to install. Elite Wall and Door programs integrate easily with your space and footprint, simply paired with our wide range of PC350 Swing Glass Doors, offering a variety of compatible hardware options and design, simplifying the specification process.

Elite Solutions framing profiles are cut on site from common lengths and are often readily available. Elite Solutions is one of the most field adaptable systems on the market offering optimal responsiveness. Varied building conditions are not an obstacle, allowing flexibility should any on-site discrepancies occur.



SINGLE GLAZING

SIZING

- Ceiling heights from 82" to 144"
- Base and ceiling frame
- 1 3/4" frame & trim
- Horizontal widths cut on site up to 144"

BUILDING ACCOMMODATION & ADJUSTABILITY

- Ceiling adjustment range +/- 3/4"
- Floor adjustment range +/- 1"
- Traditional wrap-around +/- 5/8"
- Flush wall (Wall Start) +/- 1/2"

DOORS

- 2" Stile aluminum doors x 1 3/4" thick
- 3" Stile aluminum doors x 1 3/4" thick
- 5" Stile aluminum doors x 1 3/4" thick
- 1 3/4" Wood doors (by others)
- 2" Wood doors (by others) – prepped for 1 3/4" offset
- Aluminum doors can accommodate 1/4", 3/8" & 1" sealed units

GLASS OPTIONS

- 1/4" with glazing bead
- 3/8"
- 1/2"
- Laminate & tempered glass

STANDARD HARDWARE

- Door pulls - Can be colour-matched to frame finish
- Roller catch
- Adams rite MS1850 lock

PROFILES FOR TRADITIONAL WRAP AROUND

UNFINISHED – CONSTRUCTION

- 3 1/2" walls – 2 1/2" metal stud with 1 layer of 1/2" gypsum wall board both sides
- 3 3/4" walls – 2 1/2" metal stud with 1 layer of 5/8" gypsum wall board both sides
- 4 5/8" walls – 3 5/8" metal studs with 1 layer of 1/2" gypsum wall board both sides
- 4 7/8" walls – 3 5/8" metal studs with 1 layer of 5/8" gypsum wall board both sides
- 5 1/2" walls - 3 5/8" metal studs with 2 layers 5/8" gypsum wall board and 1 layer on the other side
- 6 1/4" walls – 3 5/8" metal studs with 2 layers of 5/8" wall board both sides
- 7 1/4" walls – 6" metal studs with 1 layer 5/8" gypsum wall board both sides

ELECTRICS

Prep for most electric strikes, lock sets, electric hinges & power transfer units. Room booking device wiring & Rex sensors can easily be run through the frame.

INTEGRATION

- Match existing PC350 frames
- Mixed with SRT sliding doors solutions
- No wood blocking required in wrap around installation.

OPTIONAL ADD-ONS

- 4 5/8" & 6" Aluminum corner post – to match any standard colour finish
- Vertical & horizontal mullions.



DOUBLE GLAZING

SIZING

- Ceiling heights from 82" to 144"
- Base and ceiling frame
- 1 3/4" frame & trim
- Horizontal widths cut on site up to 144"

BUILDING ACCOMMODATION & ADJUSTABILITY

- Ceiling adjustment range +/- 3/4"
- Floor adjustment range +/- 1"
- Traditional wrap around +/- 5/8"
- Flush wall (Wall Start) +/- 1/2"

DOORS

- 2" Stile aluminum doors x 1 3/4" thick
- 3" Stile aluminum doors x 1 3/4" thick
- 5" Stile aluminum doors x 1 3/4" thick
- 1 3/4" Wood doors (by others)
- 2" Wood doors (by others) – prepped for 1 3/4" offset
- Aluminum doors can accommodate 1/4", 3/8" & 1" sealed units

GLASS OPTIONS

- 1/4" with glazing bead
- 3/8"
- 1/2"
- Laminate & tempered glass

PROFILES FOR TRADITIONAL WRAP AROUND UNFINISHED – CONSTRUCTION

- 4 5/8" walls – 3 5/8" metal studs with 1 layer of 1/2" gypsum wall board both sides
- 4 7/8" walls – 3 5/8" metal studs with 1 layer of 5/8" gypsum wall board both sides

ELECTRICS

- Prep for most electric strikes, lock sets, electric hinges & power transfer units.
- Room booking device wiring & Rex sensors can easily be run through the frame

INTEGRATION

- Match existing PC350 frames
- No wood blocking required in wrap around installation.

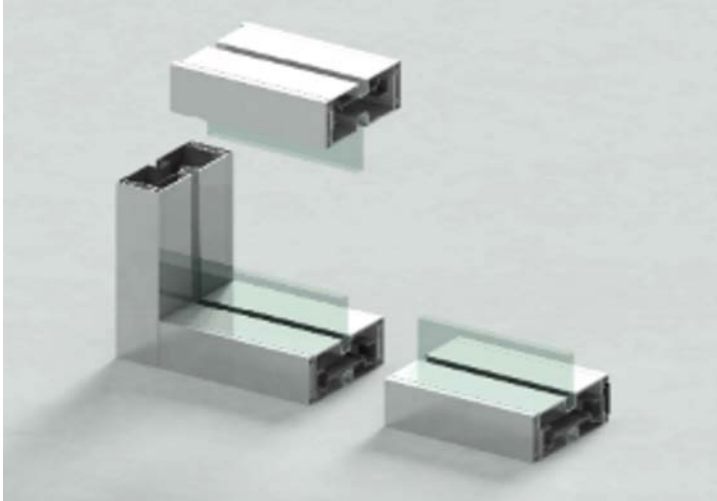
STANDARD HARDWARE

- Door pulls – can be colour matched to frame finish
- Roller catch
- Adams rite MS1850 lock

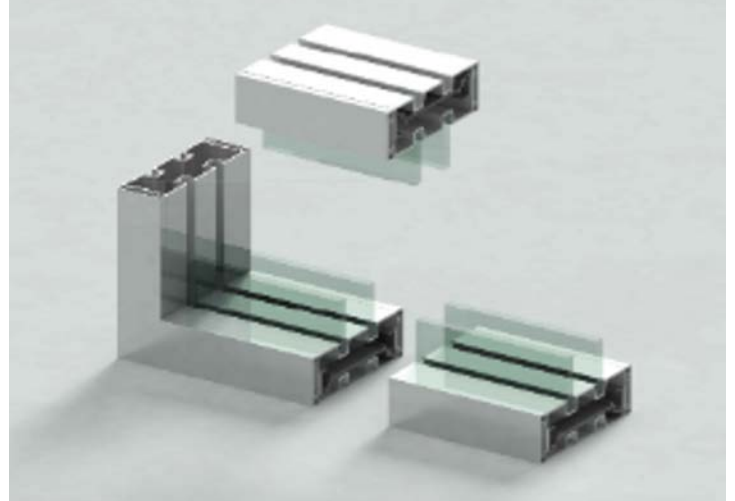
OPTIONAL ADD-ONS

- 4 5/8" & 6" Aluminum corner post – to match any standard colour finish
- Vertical & horizontal mullions

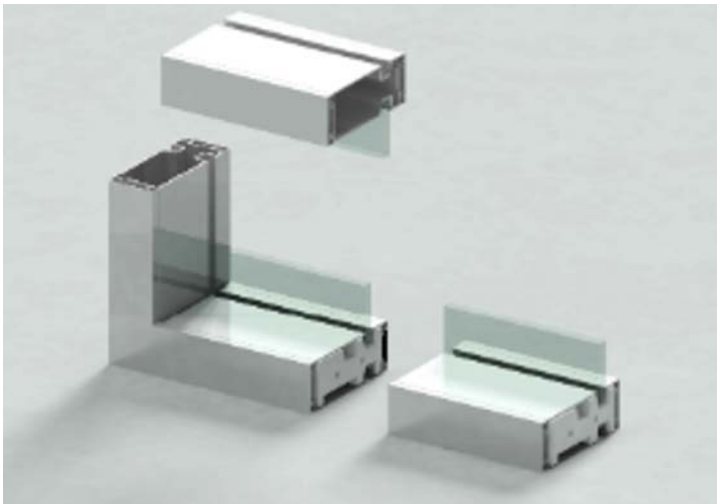




CENTER GLAZE POCKET



DOUBLE GLAZE POCKET



OFFSET GLAZE POCKET



2" NARROW PROFILE

HEAD OFFICE
130 Nolan Court Markham, ONL3R 2V7 Canada
www.pc350.com | info@pc350.com

CANADA
1-866-633-0233
info@pc350.com

U.S.A
1-844-409-2365
info.us@pc350.com

CARIBBEAN
345-943-3463
info.caribbean@pc350.com

PC
350