

HARDWARE

OFFSET LADDER DOOR PULL LOFT SERIES

Key Features:

- For Swing and Sliding Doors
- Aluminum or Wood Door mounting
- Optional Glass Mounting Capability
- Barrier free compliant
- Offset design allows access to optional lock
- Ergonomic design
- 7 year manufacturers warranty

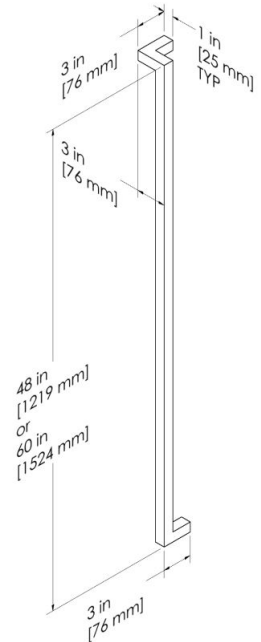
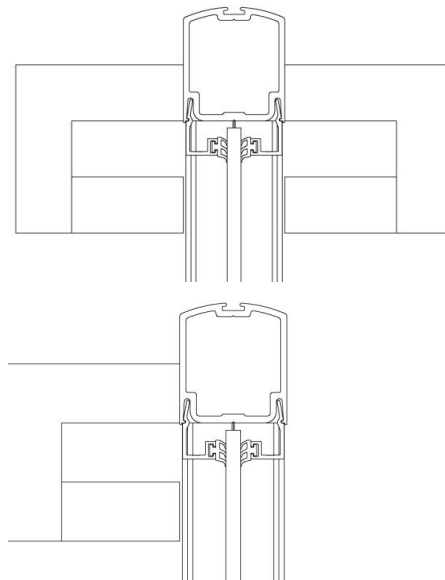
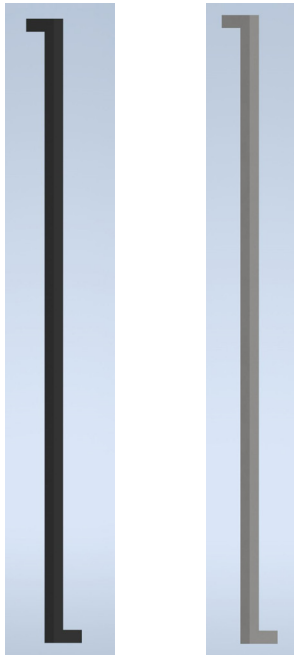
Available Finishes*:

- Brushed Stainless Steel
- Colour match to PC350 Frame;
Black, Graphite or Studio White

* For full range of optional finishes please contact PC350



PC
350
ARCHITECTURAL
WALLS



For more information please contact your PC350 Representative.

130 Nolan Court, Markham, ON L3R 2V7
T: 905.475.6022
E: info@pc350.com

BEAUTIFUL. ARCHITECTURAL. GLASS WALLS.

PC350.COM