

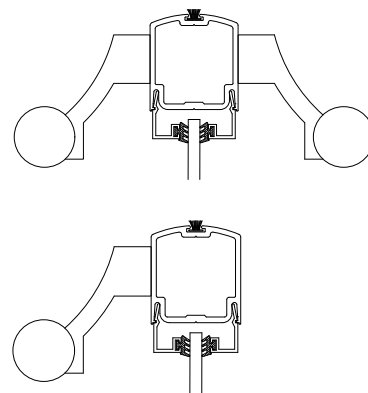
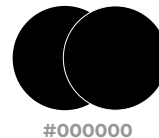
# HARDWARE

## OFFSET LADDER DOOR PULL - MUTI SERIES

### KEY FEATURES:

- For swing and sliding doors
- Aluminum or wood door mounting
- Optional glass mounting capability
- Barrier free compliant
- Offset design allows access to optional lock
- Ergonomic design

### AVAILABLE FINISHES:



Size	Overall Length & Width			
	Thickness	CTC	O/A	Offset
Standard 18" (457mm)	1" (25mm)	12" (305mm)	18" (457mm)	1-1/4" (32mm)
Standard 24" (610mm)	1" (25mm)	18" (457mm)	24" (610mm)	1-1/4" (32mm)
Standard 30" (762mm)	1" (25mm)	24" (610mm)	30" (762mm)	1-1/4" (32mm)
Standard 36" (914mm)	1" (25mm)	24" (610mm)	36" (914mm)	1-1/4" (32mm)
Standard 48" (1219mm)	1" (25mm)	36" (914mm)	48" (1219mm)	1-1/4" (32mm)

\*Custom sizes available upon request



**PC350**  
WE CREATE INSPIRED WORKSPACES